

RESOLUTION 2023-09-05-1

WHEREAS, the Pennington County Board of Commissioners have determined that it would be in the best interest of the residents of Pennington County that perpetual load limit restrictions and restricted truck traffic be established on certain roads effective September 25, 2023; and

WHEREAS, this Board has the authority to establish restriction to the weight of vehicles on highways under their jurisdiction pursuant to SDCL 32-14-6 and SDCL 32-22-25; and

WHEREAS, this Board has the authority to prohibit the operation of trucks on designated highways under their jurisdiction pursuant to SDCL 32-14-7;

THEREFORE BE IT RESOLVED, that the Pennington County Board of Commissioners does hereby establish a perpetual load limit restriction of six (6) tons per axle on the following county highways:

Long View Road from East Highway 44 east to Radar Hill Road for a distance of 2.46 miles;

Old Folsom Road from Lower Spring Creek Road to Lamb Road for a distance of 4.94 miles;

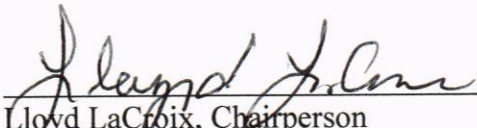
South Valley Drive from East Minnesota Street east then north to Blanche Drive, for a distance of 1.43 miles;

BE IT FURTHER RESOLVED, that the Pennington County Board of Commissioners does hereby establish South Valley Drive from East Minnesota Street east then north to Blanche Drive as a no through truck zone for trucks over 12,000 pounds GVW; and

BE IT FURTHER RESOLVED, that the Pennington County Highway Department install and maintain appropriate signs designating the limitations and prohibitions set forth in this resolution; and

BE IT FURTHER RESOLVED, that Pennington County requests the South Dakota Department of Public Safety and the South Dakota Highway Patrol to enforce the load limit restrictions and no through trucks zone as posted.

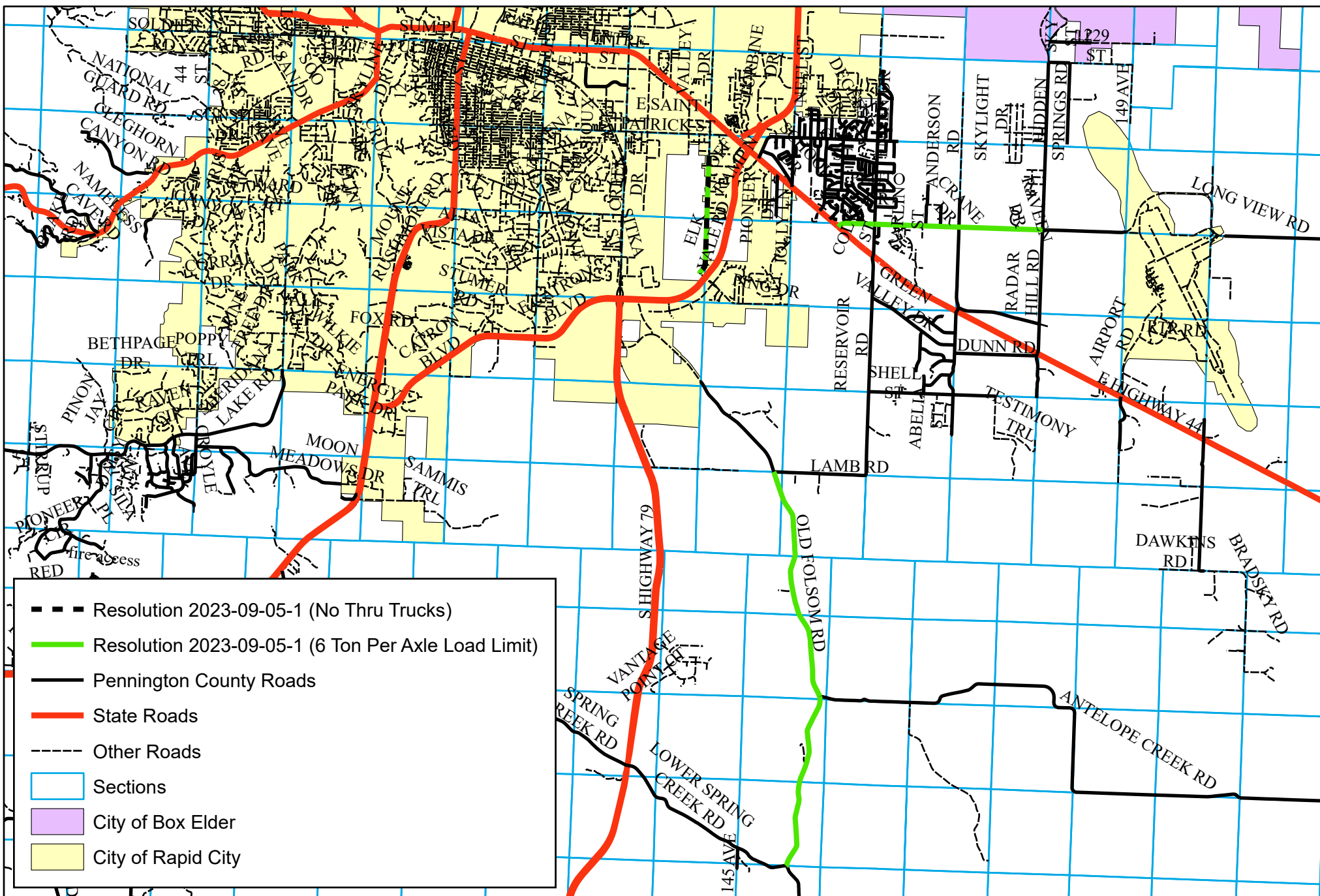
Dated this 5th day of September, 2023.


Lloyd LaCroix, Chairperson
Pennington County Board of Commissioners

ATTEST:


Cindy Mehler, Auditor





PENNINGTON COUNTY HIGHWAY DEPT.
 3601 CAMBELL STREET
 RAPID CITY, SD 57701
 (605) 394-2166

Resolution 2023-09-05-1 Load Limit and Through Truck Restrictions

DRAWN BY: CJB

8/29/2023

SCALE: 1 in = 1.5 mile

