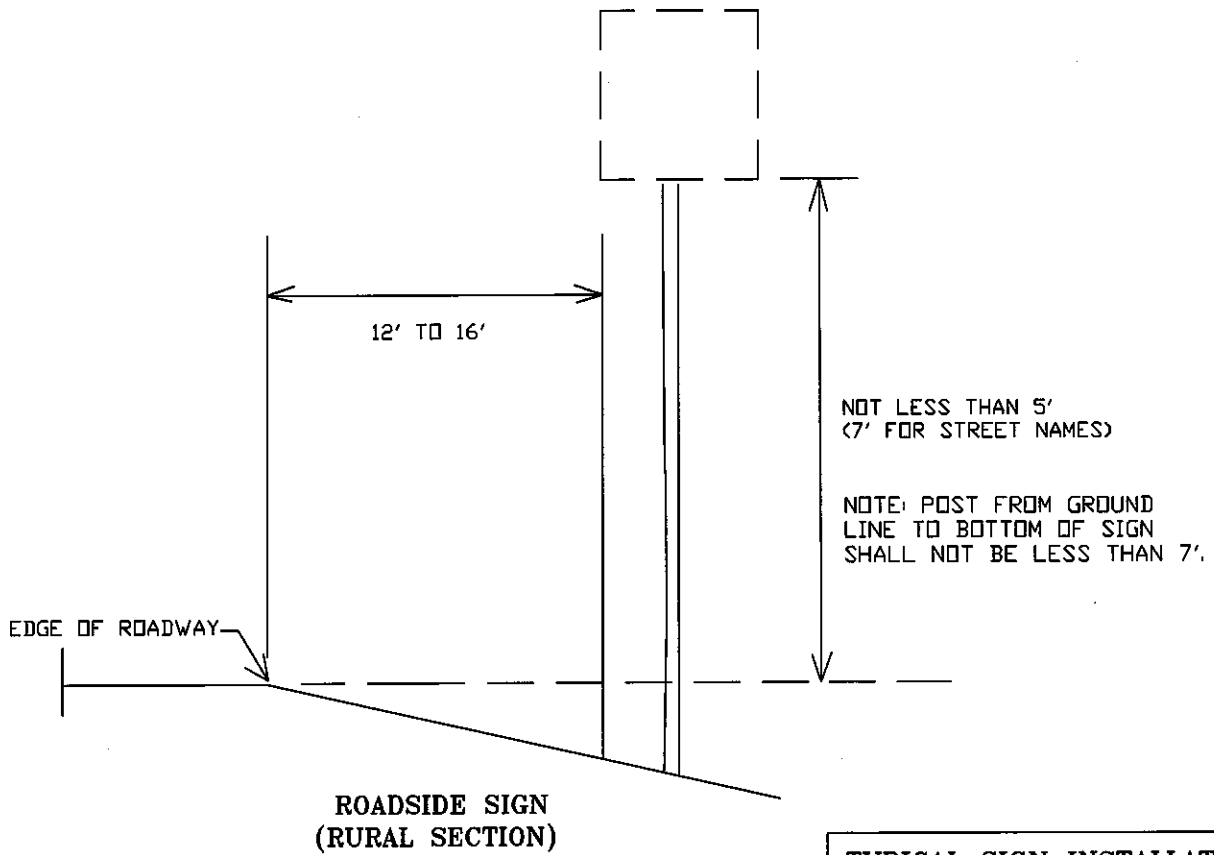
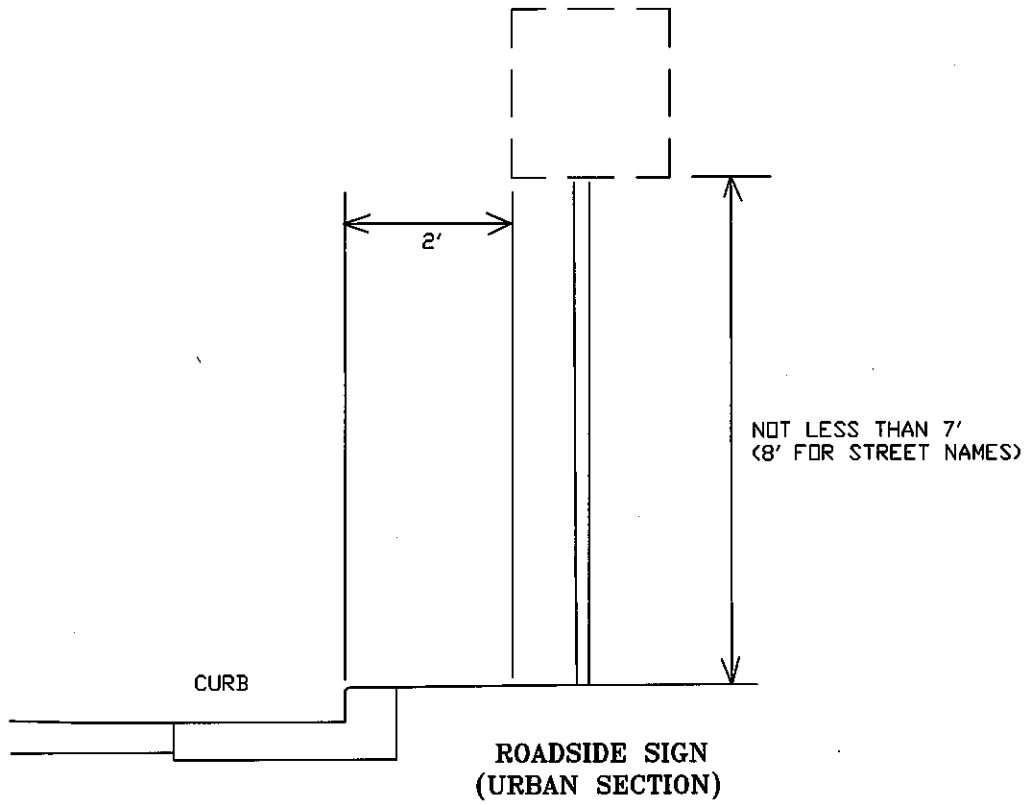


Specifications for Construction and Installation of Traffic Signs

Pennington County Highway Department

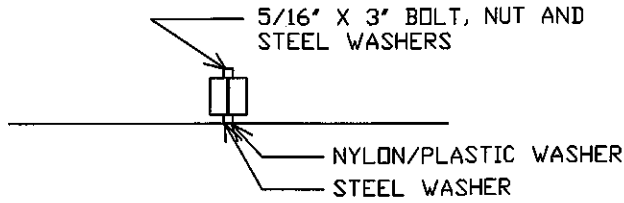
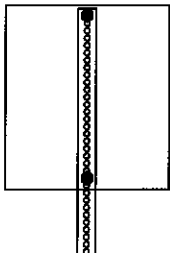


TYPICAL SIGN INSTALLATION

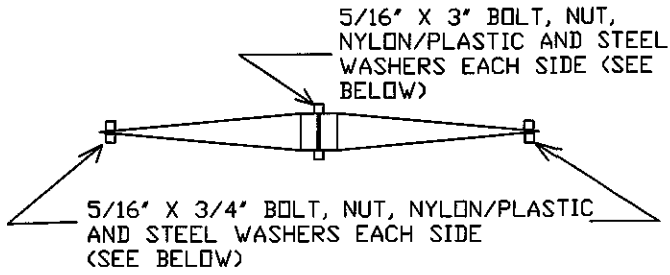
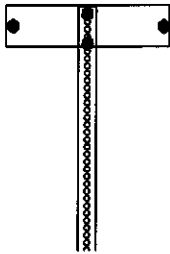
**PENNINGTON COUNTY HWY DEPT
3601 CAMBELL STREET
RAPID CITY, SD 57701
(605) 394-2166**

REV: WDA
NOV, 2004

DRAWN BY: WDA
MARCH, 1999

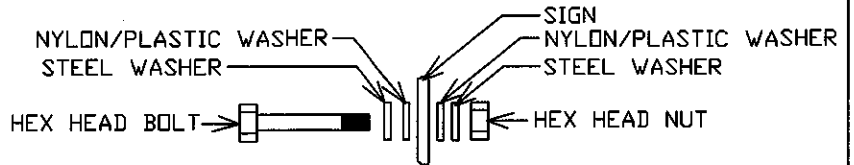
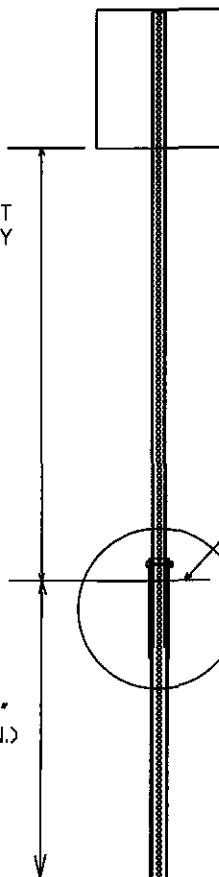


SIGN MOUNTING



NOTE: STREET NAME MOUNTING CONSISTS OF TWO SIGNS, EACH WITH LETTERING ON ONE SIDE MOUNTED BACK TO BACK AROUND THE POST AS SHOWN.

STREET NAME MOUNTING



STREET SIGN BOLT DETAIL

SIGN CONFIGURATION

TYPICAL SIGN INSTALLATION
 PENNINGTON COUNTY HWY DEPT
 3601 CABBELL STREET
 RAPID CITY, SD 57701
 (605) 394-2166

REV: CJB JULY, 2012 REV: WDA NOV, 2004 DRAWN BY: WDA MARCH, 1999

3/8" X 3 1/2" HEX HEAD
BOLT W/ NUT AND WASHER

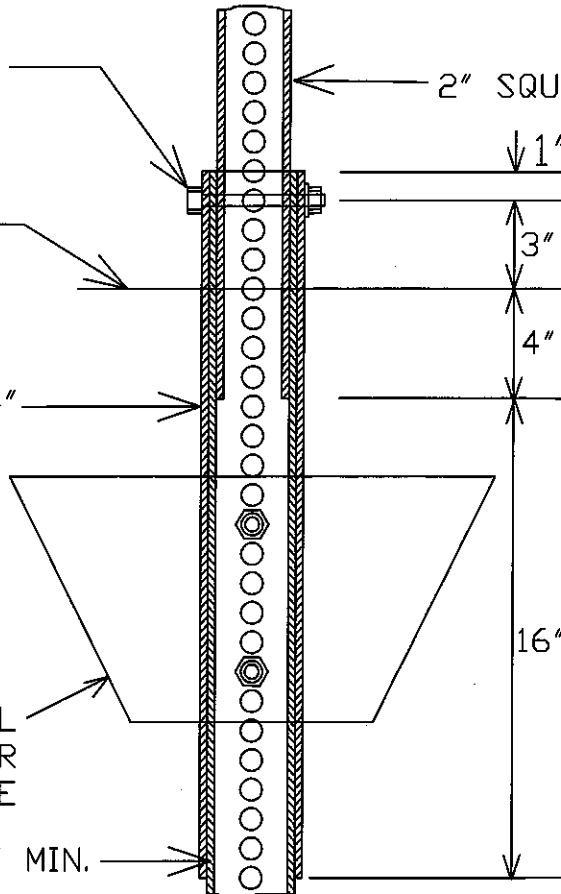
2" SQUARE

GROUND
LEVEL

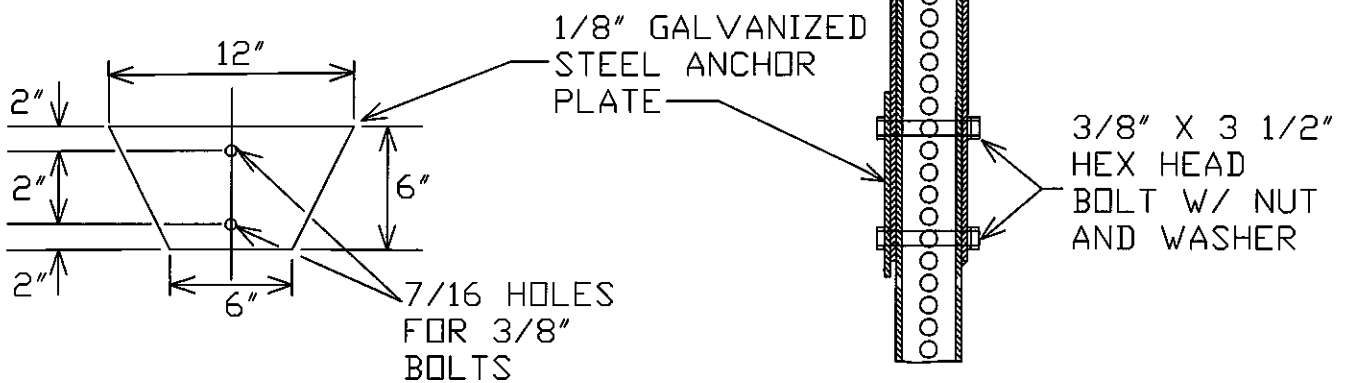
2 1/2" SQUARE X 24"

SEE DETAIL
BELOW FOR
ANCHOR PLATE

2 1/4" SQUARE X 48" MIN.



BREAKAWAY DETAIL



ANCHOR PLATE DETAILS

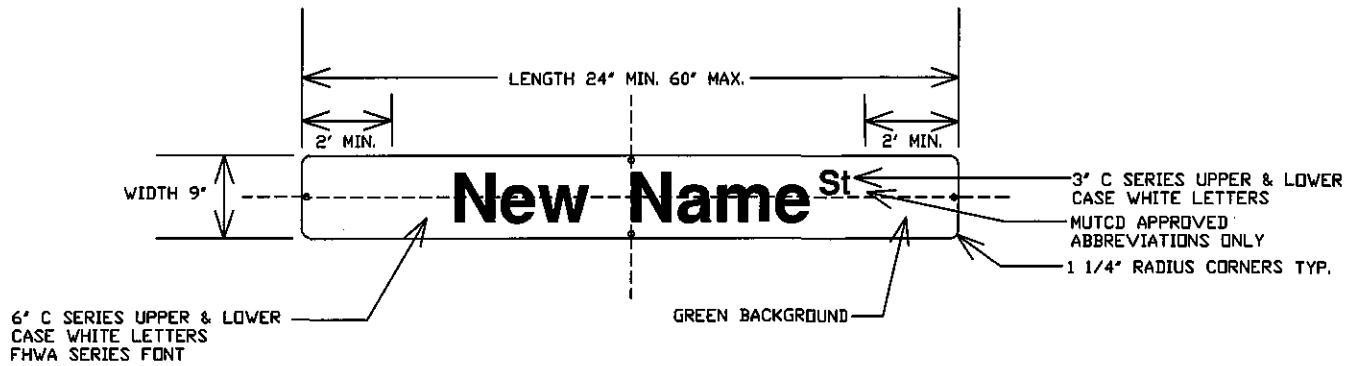
TYPICAL SIGN INSTALLATION

PENNINGTON COUNTY HWY DEPT
3601 CAMBELL STREET
RAPID CITY, SD 57701
(605) 394-2166

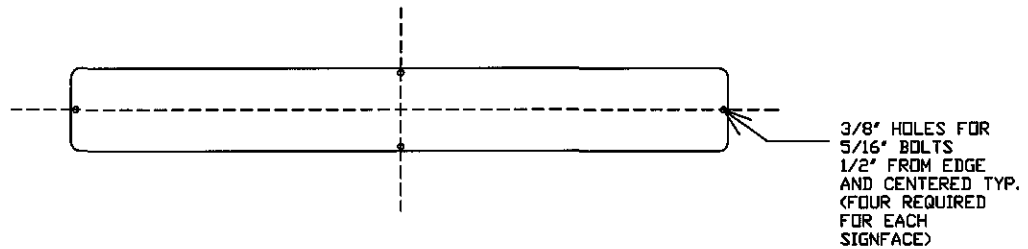
REV: CJB
MAY, 2010

REV: WDA
NOV, 2004

DRAWN BY: WDA
MARCH, 1999



TYPICAL STREET SIGN



MOUNTING HOLE LAYOUT FOR STREET SIGN

STREET SIGNS:

ALUMINUM SHEETING SHALL MEET THE REQUIREMENTS OF ASTM B 209 FOR ALLOY 5052-H38 OR 6061-T6. THE ALUMINUM SHALL BE PROPERLY DEGREASED AND ETCHED OR TREATED WITH A LIGHT, TIGHT, AMORPHOUS CHROMATE COATING. SHEET ALUMINUM THICKNESS SHALL BE 0.080 MINIMUM.

FACING SHALL MEET OR EXCEED THE REQUIREMENTS OF ASTM D 4956, TYPE III ('HIGH INTENSITY PRISMATIC').

LETTERING SHALL MEET THE REQUIREMENTS OF MUTCD FOR THE SIZE AND TYPE INDICATED. LETTERING SHALL BE TRANSPARENT INK OR TRANSLUCENT FILM PLACED OVER WHITE TO CREATE WHITE LETTERING.

OTHER SIGNS:

ALUMINUM SHEETING SHALL MEET THE REQUIREMENTS OF ASTM B 209 FOR ALLOY 5052-H38 OR 6061-T6. THE ALUMINUM SHALL BE PROPERLY DEGREASED AND ETCHED OR TREATED WITH A LIGHT, TIGHT, AMORPHOUS CHROMATE COATING. SHEET ALUMINUM THICKNESS SHALL BE AS DESIGNATED FOR SPECIFIC SIGNAGE.

FACING AND BORDERS SHALL MEET THE REQUIREMENTS OF ASTM D 4956, TYPE III ('HI INTENSITY OR DIAMOND GRADE') OR EQUIVALENT.

LETTERING SHALL MEET THE REQUIREMENTS OF MUTCD FOR THE SIZE AND TYPE INDICATED.

SIGN POSTS:

PERFORATED TUBE TYPE CONFORMING TO ASTM A 653, G90, STRUCTURAL QUALITY, GRADE 50, CLASS 1.

POSTS SHALL BE A SQUARE TUBE FORMED OF 12 GAUGE STEEL (0.105 INCH THICK), ROLLED TO SIZE. POSTS SHALL BE HOT DIPPED GALVANIZED WITH A 1.25 OUNCE PER SQUARE FOOT COATING CONFORMING TO ASTM A 525.

POSTS SHALL BE PUNCHED, BORED OR HAVE KNOCKOUTS WITH 7/16" DIAMETER HOLES ON ONE INCH CENTERS OF ALL FOUR SIDES FOR THE ENTIRE LENGTH OF THE POSTS.

HARDWARE:

BOLTS, NUTS AND WASHERS FOR ATTACHING SIGNS SHALL CONFORM TO ASTM A 307. BOLTS, NUTS AND WASHERS SHALL BE GALVANIZED OR PLATED TO PREVENT RUST IN ACCORDANCE WITH ASTM A 153.

PLASTIC OR NYLON WASHERS, SHALL BE OF MATERIALS AS RECOMMENDED BY THE SHEETING MANUFACTURER.

TYPICAL SIGN INSTALLATION

PENNINGTON COUNTY HWY DEPT
3601 CABELL STREET
RAPID CITY, SD 57701
(605) 394-2166

REV: CJB JULY, 2012	REV: CJB JULY, 2011	REV: CJB MAY, 2010	REV: WDA NOV, 2004	DRAWN BY: WDA MARCH, 1999
------------------------	------------------------	-----------------------	-----------------------	------------------------------