

- AST 2025
- AST with Pavement Markings



PENNINGTON COUNTY HIGHWAY DEPT.
 3601 CAMBELL STREET
 RAPID CITY, SD 57701
 (605) 394-2166

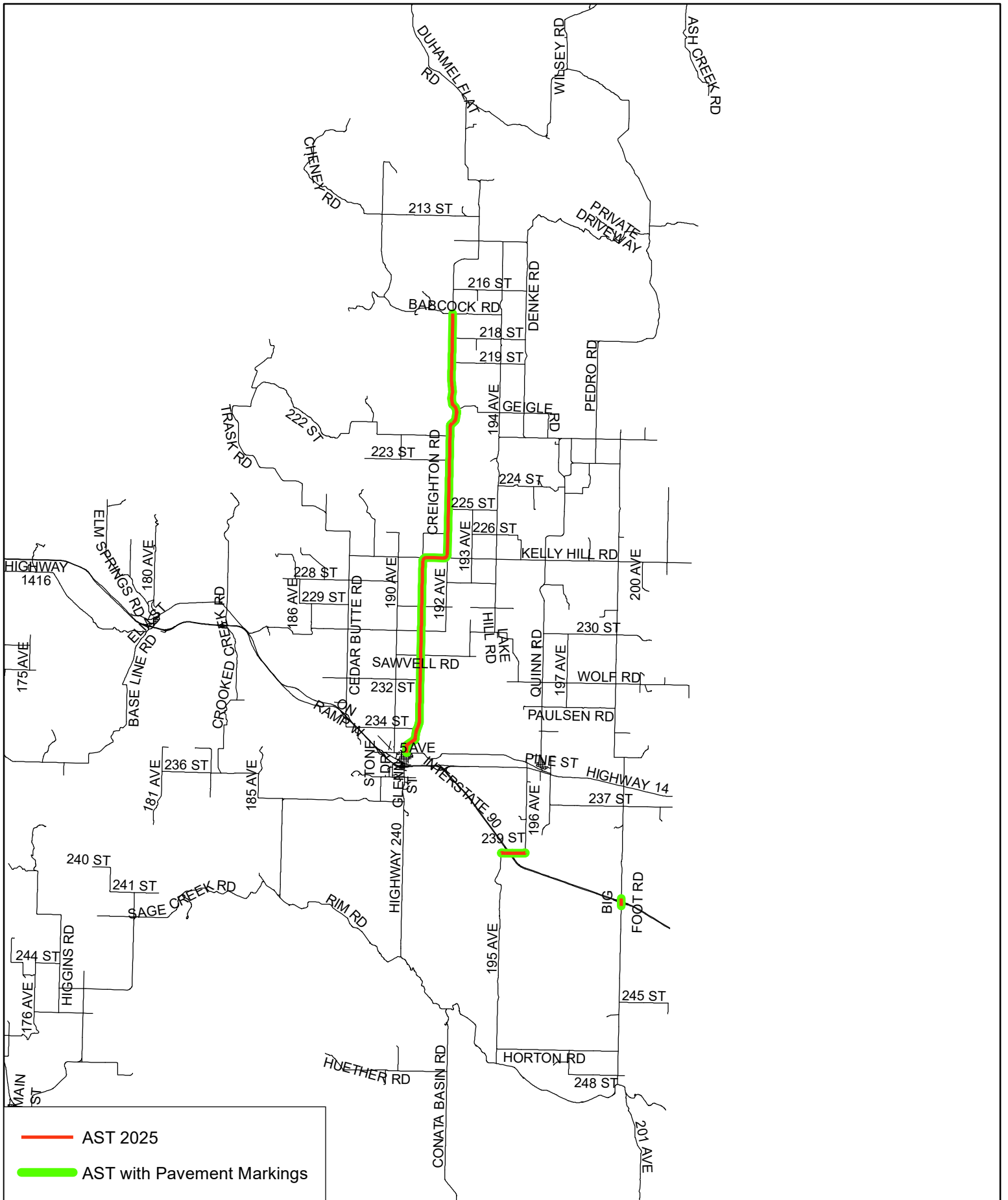
AST 2025 Map Sheet Areas

DRAWN BY: ER

2/8/2025

SCALE: 1in = 11.28 mi





- AST 2025
- AST with Pavement Markings



PENNINGTON COUNTY HIGHWAY DEPT.
 3601 CAMBELL STREET
 RAPID CITY, SD 57701
 (605) 394-2166

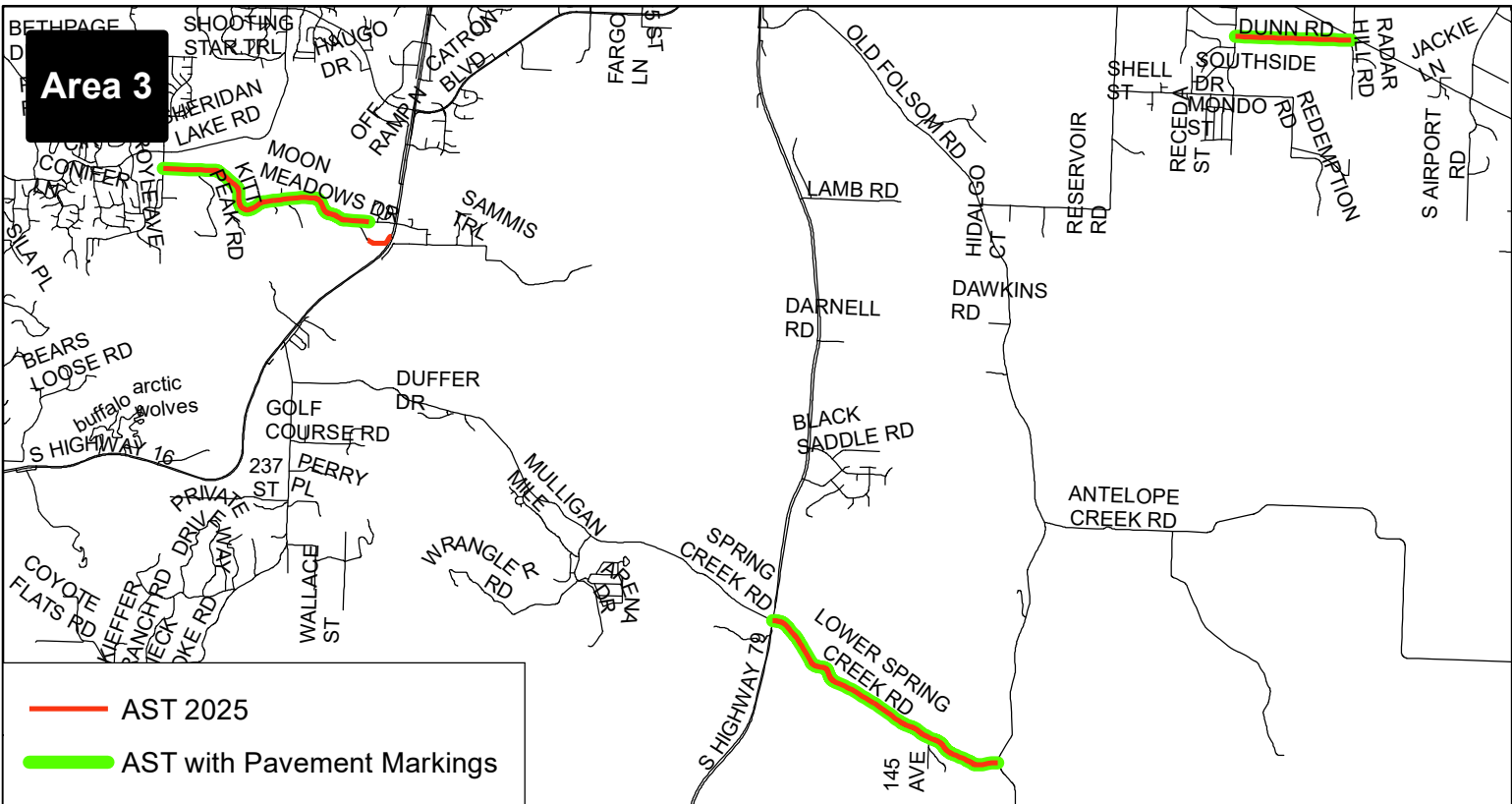
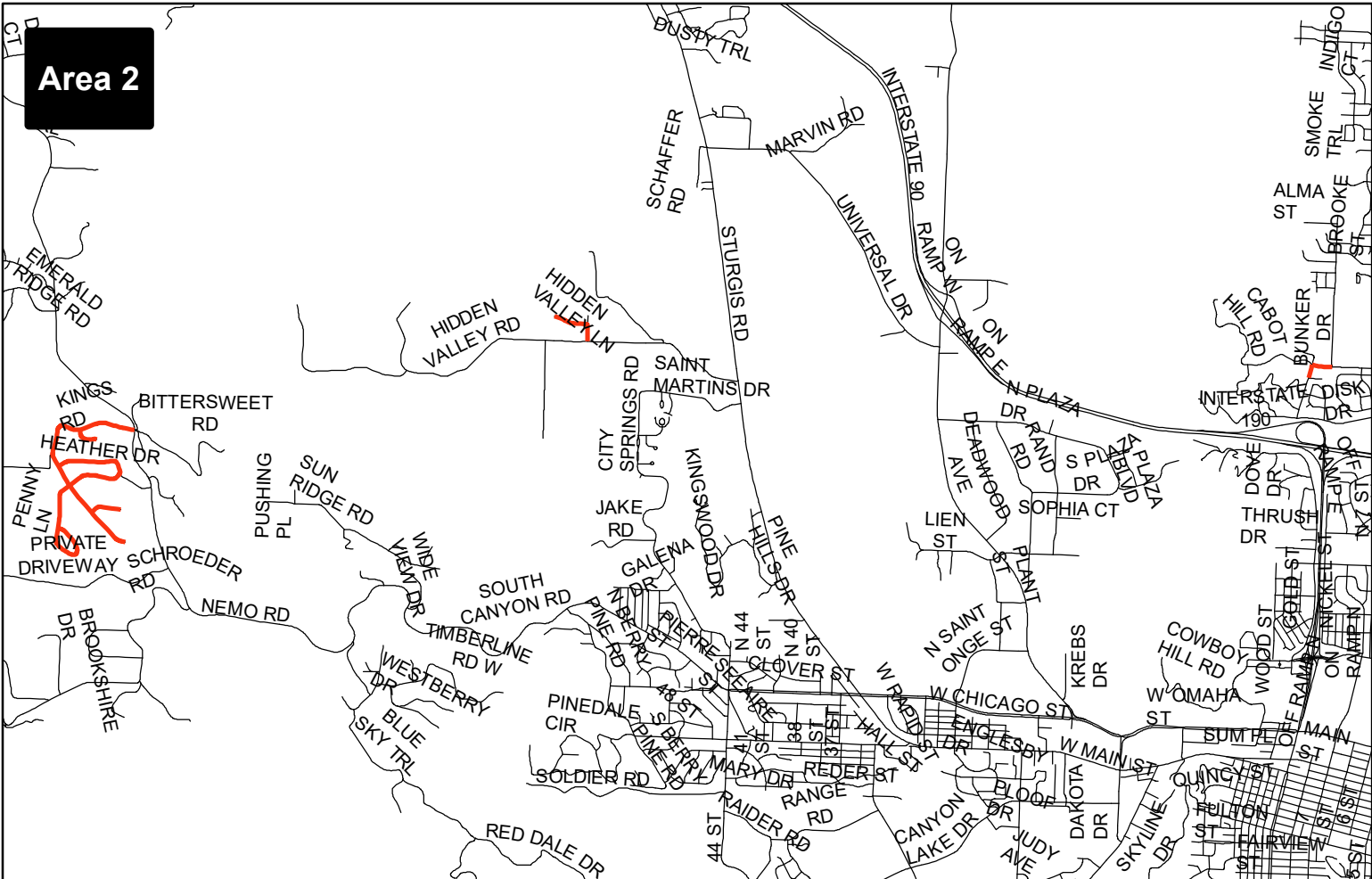
AST 2025 (Area 1)

DRAWN BY: ER

2/8/2025

SCALE: 1in = 2.71 mi





Area 3

— AST 2025

— AST with Pavement Markings



PENNINGTON COUNTY HIGHWAY DEPT.
 3601 CAMBELL STREET
 RAPID CITY, SD 57701
 (605) 394-2166

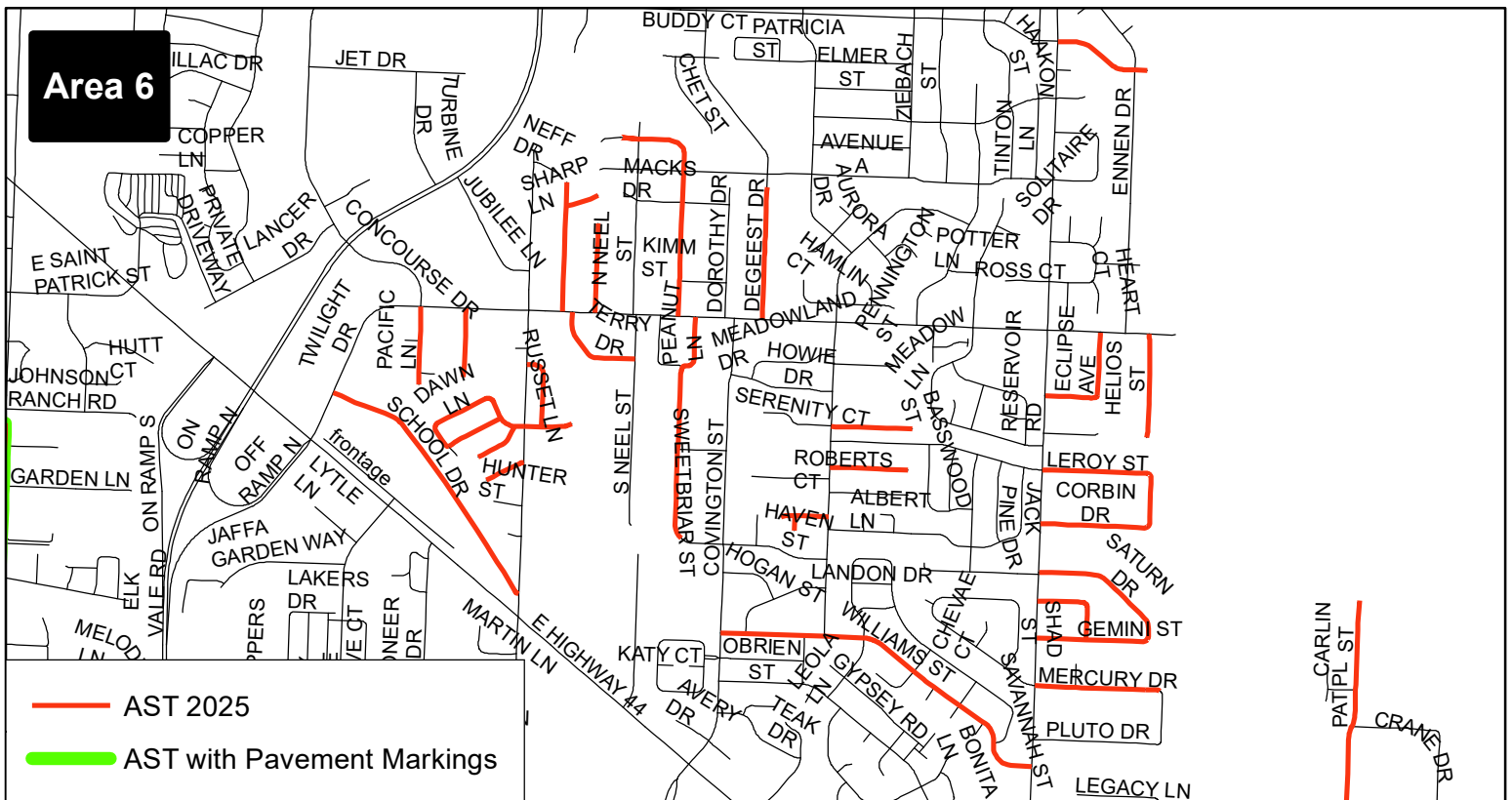
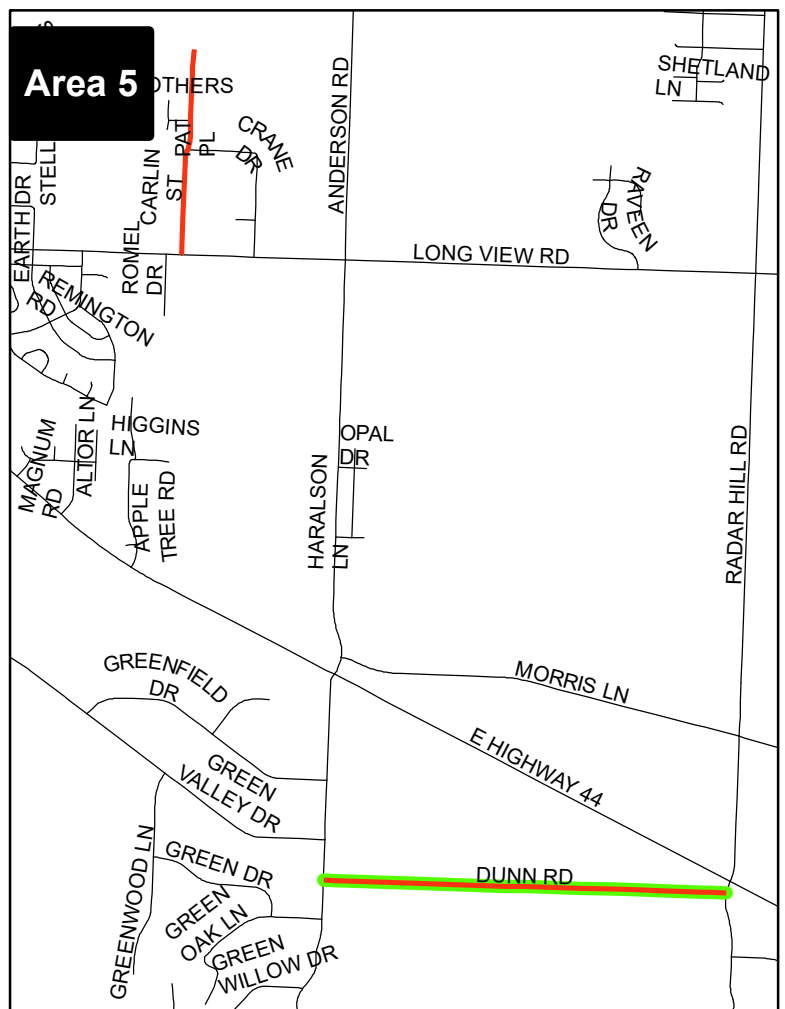
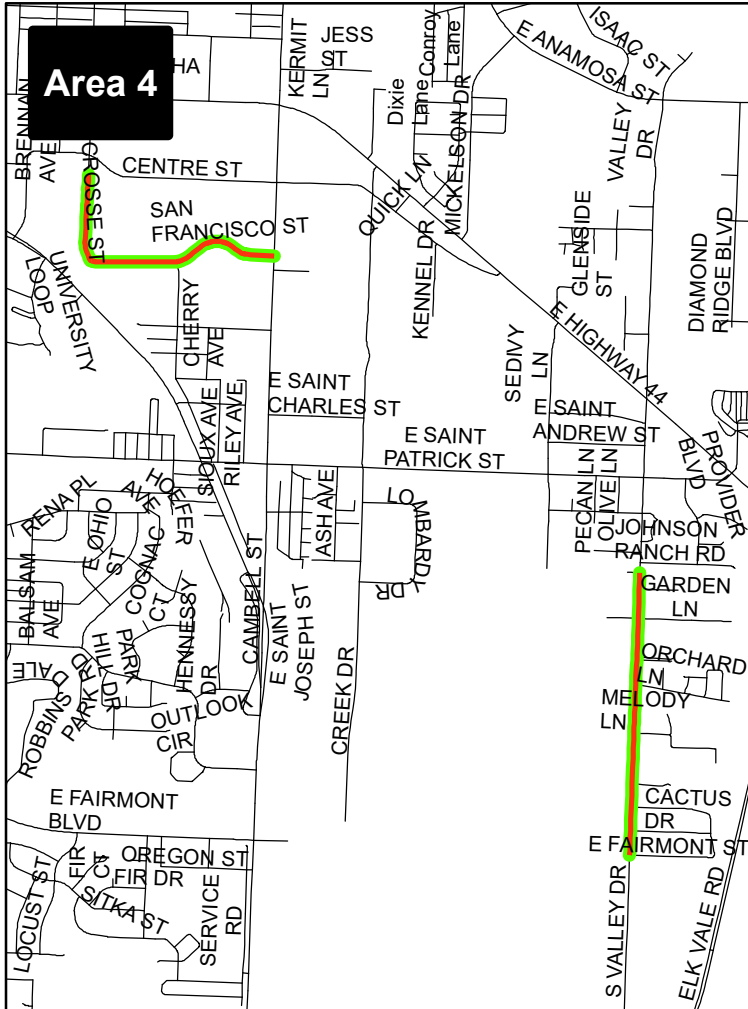
AST 2025 (Area 2 & 3)

DRAWN BY: ER

2/8/2025

SCALE: 1in = Var.





- AST 2025
- AST with Pavement Markings



PENNINGTON COUNTY HIGHWAY DEPT.
 3601 CAMBELL STREET
 RAPID CITY, SD 57701
 (605) 394-2166

AST 2025 (Area 4, 5, & 6)

DRAWN BY: ER

2/8/2025

SCALE: 1in = Var.

