

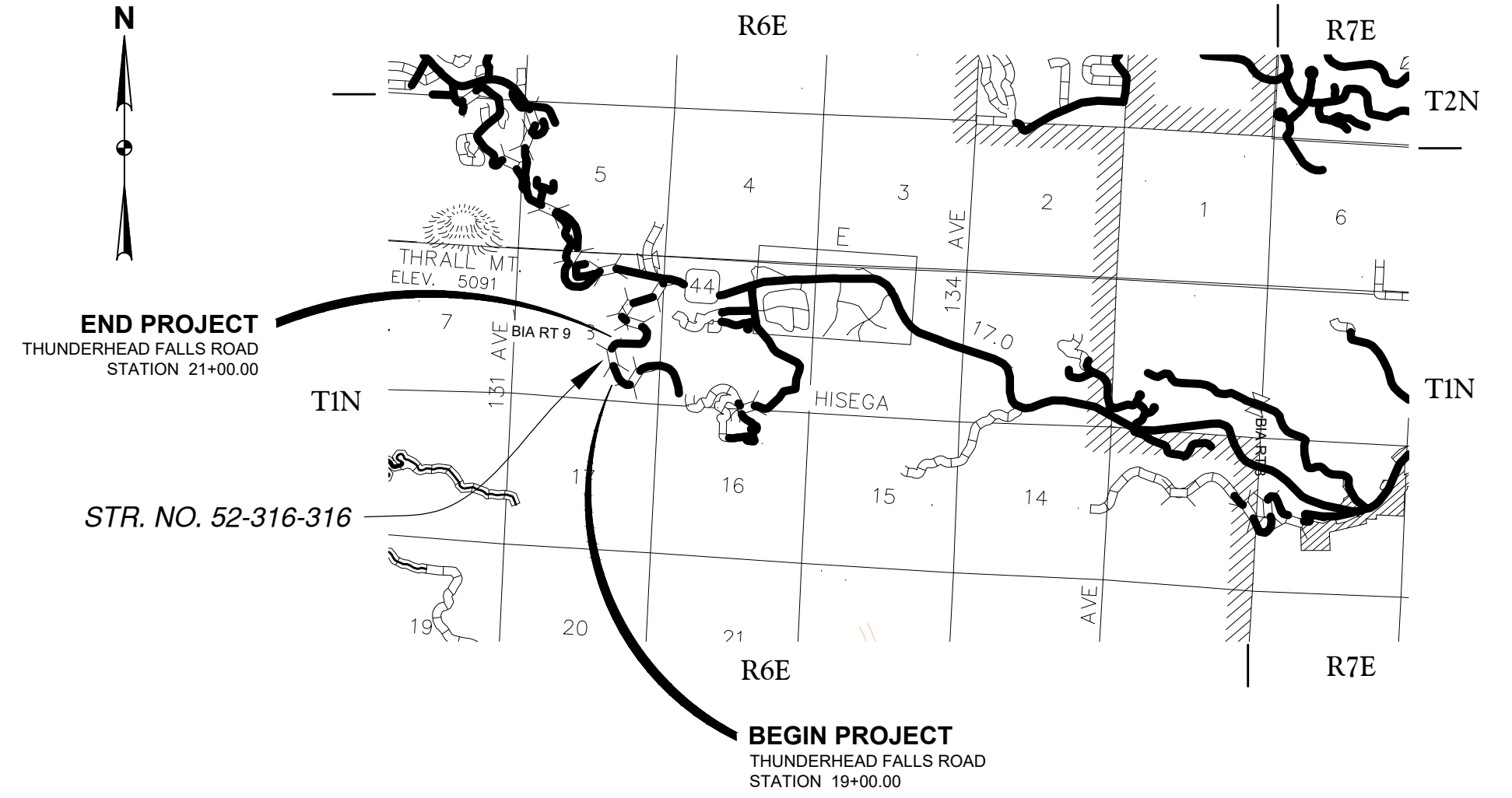
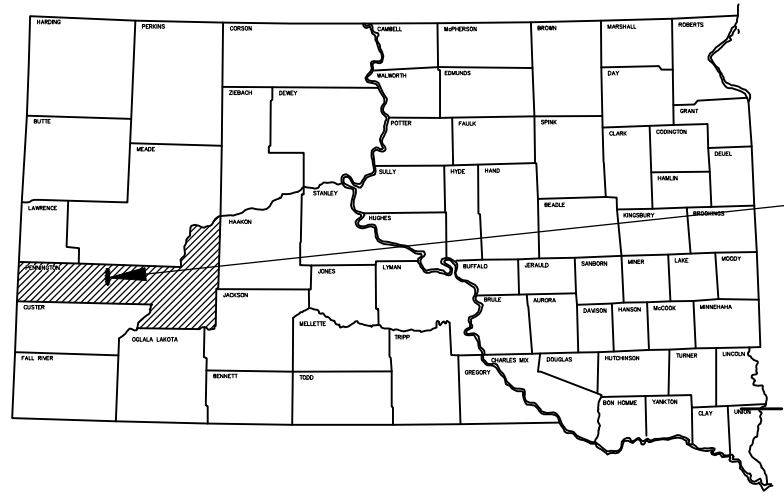
PLANS FOR PROPOSED

PROJECT BRO 8052(00)21-1 THUNDERHEAD FALLS ROAD PENNINGTON COUNTY

STRUCTURE REPLACEMENT AND APPROACH GRADING PCN 08FD

INDEX OF SHEETS

SECTIONS	
1	TITLE SHEET
2 - 5	ESTIMATE OF QUANTITIES AND ENVIRONMENTAL COMMITMENTS
6 - 11	GENERAL NOTES AND TABLES
12	TYPICAL GRADING SECTIONS
13	TRAFFIC CONTROL
14	EROSION AND SEDIMENT CONTROL PLAN
15 - 18	STORM WATER POLLUTION PROTECTION PLAN (SWPPP)
19 - 20	HORIZONTAL ALIGNMENT DATA
21	CONTROL DATA
22	LEGEND
23 - 24	PLAN AND PROFILE SHEETS
25	EASEMENT PLAN
26	REMOVAL PLAN
27	GUARDRAIL LAYOUT
28	PAVEMENT MARKING LAYOUT
29 - 40	STANDARD PLATES
41 - 53	DETAILS FOR 44' - 0" CONCRETE RIGID FRAME BRIDGE
54 - 55	STRUCTURE STANDARD PLATES
56 - 59	CROSS SECTIONS



DESIGN DESIGNATION

AADT (2020) 184
V 25 mph

STORM WATER PERMIT

Major Receiving Body of Water: Rapid Creek
Area Disturbed: 0.43 Acres
Total Project Area: 0.32 Acres
Approx. Begin Lat,Long: 44.0582, -103.4194

Gross Length	200 Feet	0.038 Miles
Length of Exceptions	0 Feet	0 Miles
Net Length	200 Feet	0.038 Miles



Plot Scale- #####

Plotted From- owen labrie

File- K:\Projects\County\SD\Pennington\1903_02237_Thunderhead_Falls\CAD\Design\Plans\Sections\01-TitleSheet (North)_2022.dwg

Plotting Date: 4/6/2022

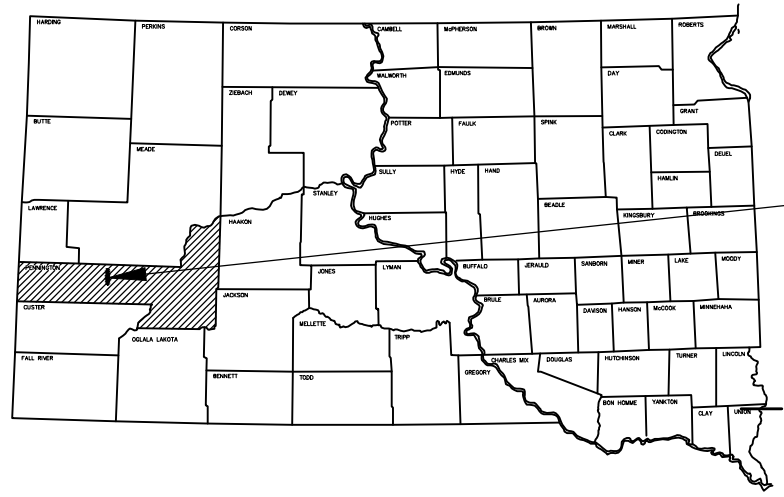
PLANS FOR PROPOSED

PROJECT BRO 8052(00)22-6 THUNDERHEAD FALLS ROAD PENNINGTON COUNTY

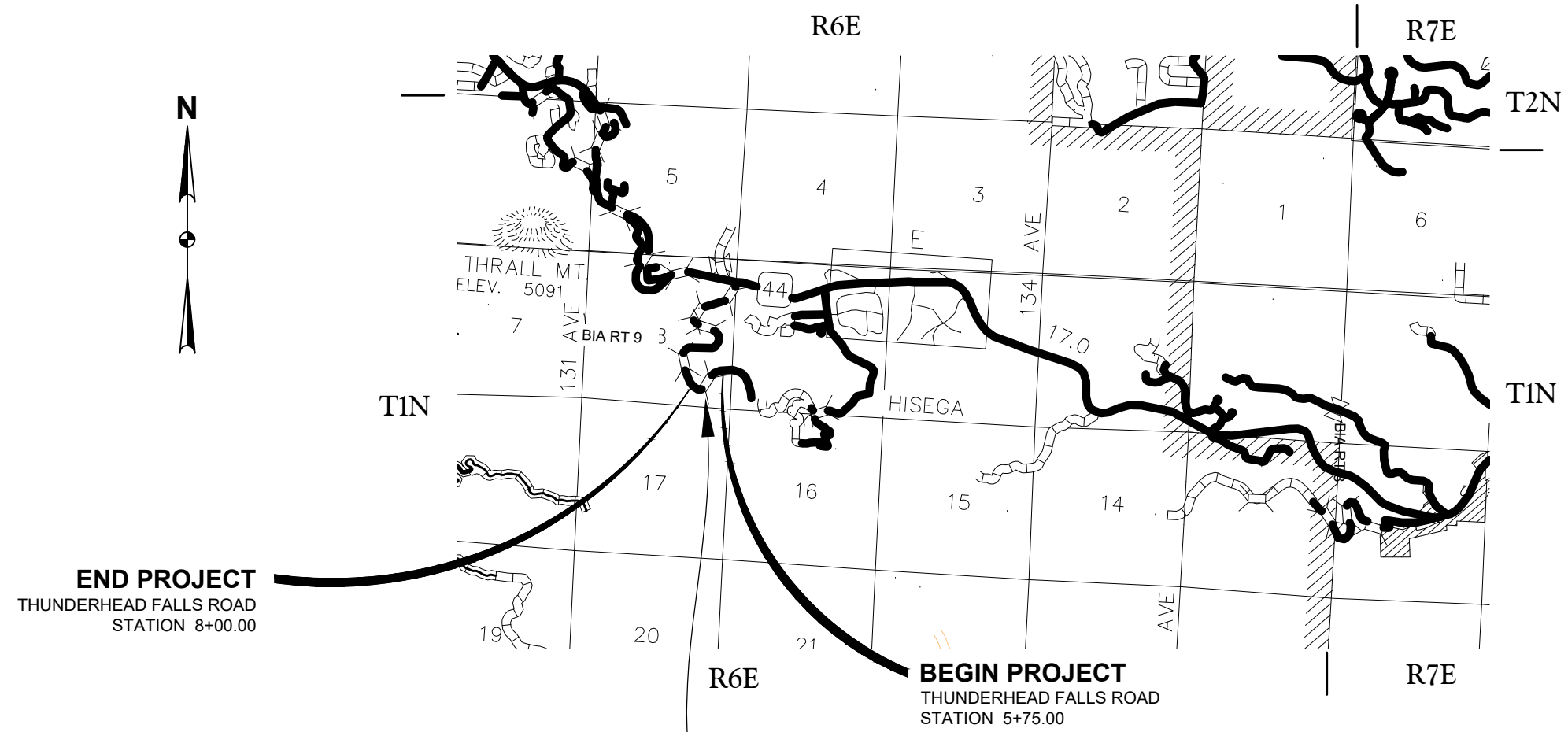
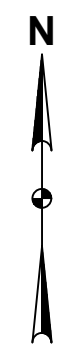
STRUCTURE REPLACEMENT AND APPROACH GRADING
PCN 08XE

INDEX OF SHEETS

SECTIONS	
1	TITLE SHEET
2 - 5	ESTIMATE OF QUANTITIES AND ENVIRONMENTAL COMMITMENTS
6 - 11	GENERAL NOTES AND TABLES
12	TYPICAL GRADING SECTIONS
13	TRAFFIC CONTROL
14	EROSION AND SEDIMENT CONTROL PLAN
15 - 18	STORM WATER POLLUTION PROTECTION PLAN (SWPPP)
19 - 20	HORIZONTAL ALIGNMENT DATA
21	CONTROL DATA
22	LEGEND
23 - 24	PLAN AND PROFILE SHEETS
25	EASEMENT PLAN
26	REMOVAL PLAN
27	GUARDRAIL LAYOUT
28	PAVEMENT MARKING LAYOUT
29 - 39	STANDARD PLATES
40 - 51	DETAILS FOR 40' - 0" CONCRETE RIGID FRAME BRIDGE
52 - 53	STRUCTURE STANDARD PLATES
54 - 56	CROSS SECTIONS



PROJECT



END PROJECT
THUNDERHEAD FALLS ROAD
STATION 8+00.00

BEGIN PROJECT
THUNDERHEAD FALLS ROAD
STATION 5+75.00

STR. NO. 52-317-318

DESIGN DESIGNATION

AAADT (2020) 184
V 25 mph

STORM WATER PERMIT

Major Receiving Body of Water: Rapid Creek
Area Disturbed: 0.40 Acres
Total Project Area: 0.40 Acres
Approx. Begin Lat,Long: 44.0551, -103.4173

Gross Length	225 Feet	0.043 Miles
Length of Exceptions	0 Feet	0 Miles
Net Length	225 Feet	0.043 Miles



Plot Scale- #####

Plotted From- owen labrie

File- K:\Projects\County\SD\Pennington\1903_02237_Thunderhead_Falls\CAD\Design\Plans\Sections\01-TitleSheet (South)_2022.dwg