

STATE OF SOUTH DAKOTA
DEPARTMENT OF TRANSPORTATION

FOR BIDDING PURPOSES ONLY

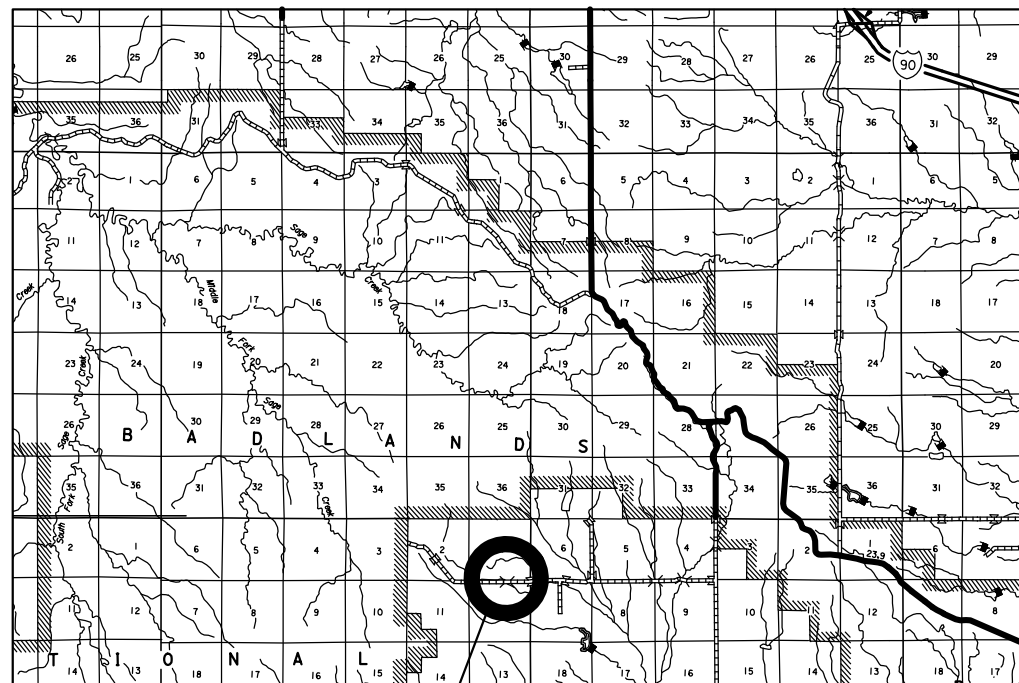
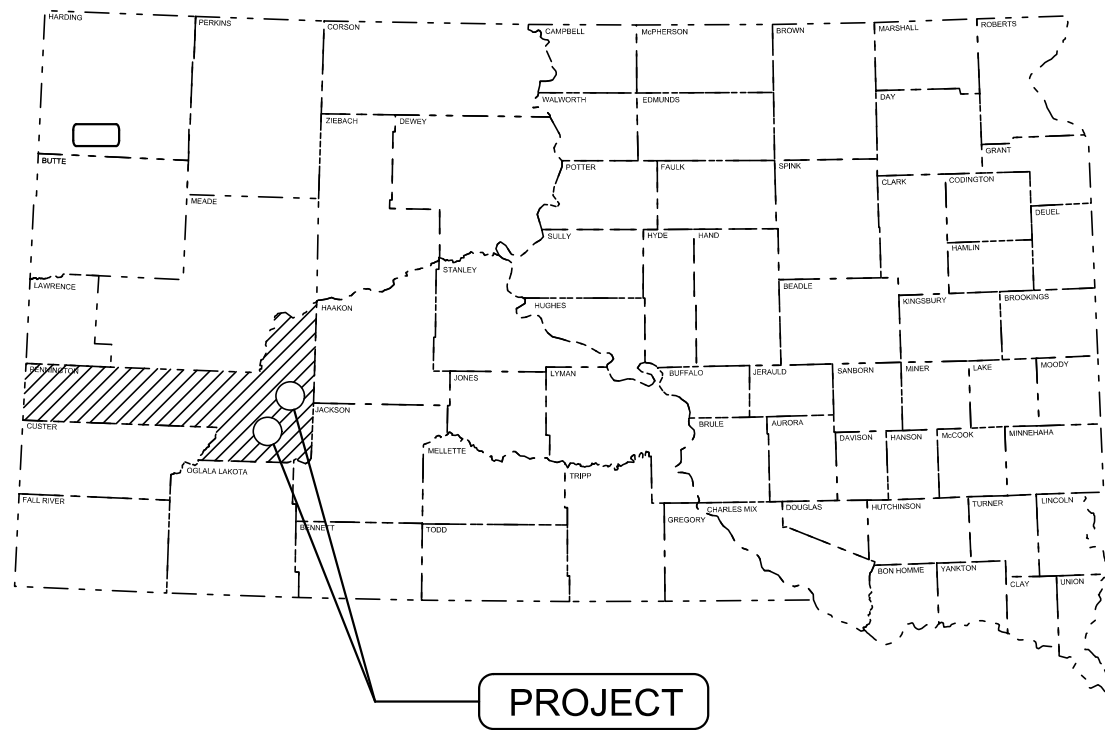
STATE OF SOUTH DAKOTA	PROJECT	SHEET	TOTAL SHEETS
	BRO 8052(72), BRO 8052(73), BRO 8052(74)	1	3

Revised 12/04/23

PLANS FOR PROPOSED
**WEST RIVER
BUNDLE 2A
STRUCTURES**
PCN's 085T, 085R, 085U
Project Number's **BRO-B 8052(73),
BRO-B 8052(72), BRO-B 8052(74)**

INDEX OF SHEETS

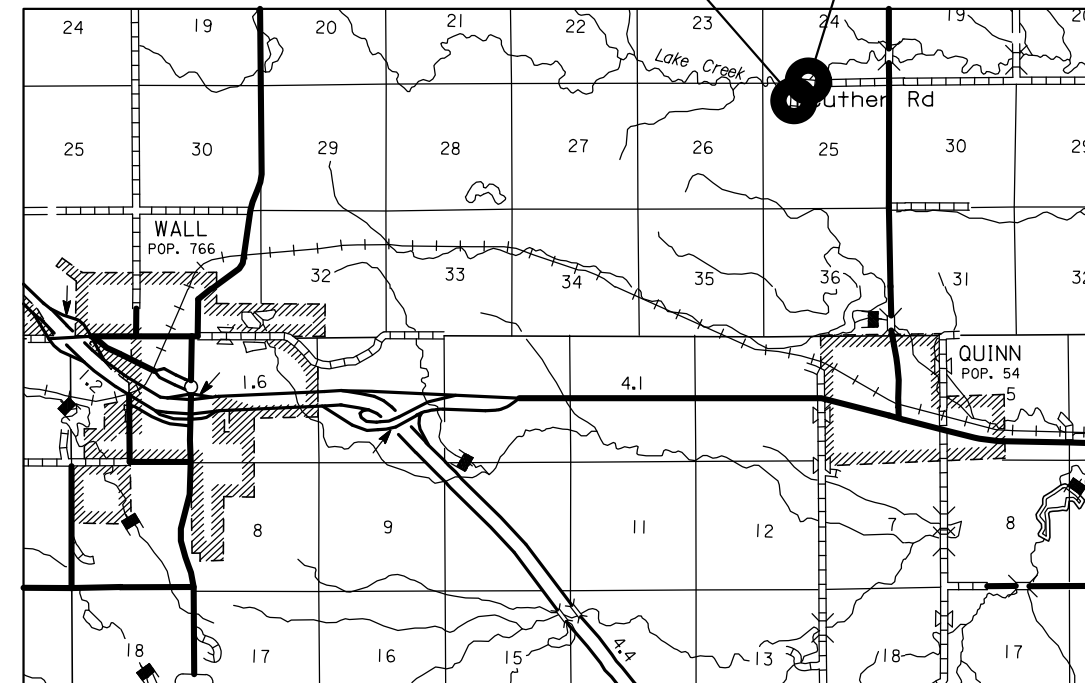
Sheet No. 1	Layout Map and Index
Sheet No. 2-3	Estimate of Quantities
Sheet No. 1-48	BRO 8052(72)
Sheet No. 1-38	BRO 8052(73)
Sheet No. 1-45	BRO 8052(74)



BRO 8052(72) PCN 085R
Str. No. 52-896-490
4 - 12' x 8' Box Culvert
Over UNNAMED CREEK
Sta 8+95.00 to Sta 11+55.00

BRO 8052(73) PCN 085T
Str. No. 52-952-341
2 - 12' x 12' BOX CULVERT
Over LAKE CREEK
Sta 13+50.00 to Sta 15+60.00

BRO 8052(74) PCN 085U
Str. No. 52-953-340
3 - 12' x 8' BOX CULVERT
Over LAKE CREEK
Sta 20+75.00 to Sta 23+60.00



Refer to individual structure
plan title sheets for county
officials, design designation,
and storm water permit information.