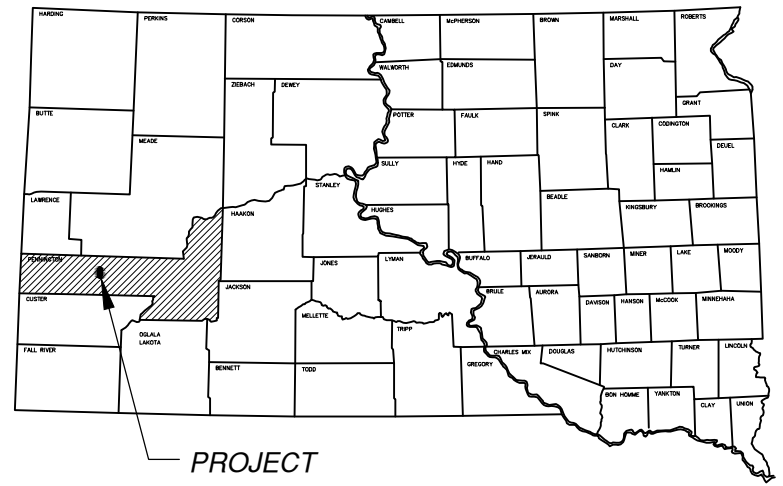


Plotting Date: 5/23/2023



PROJECT

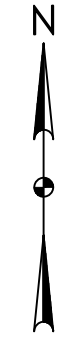
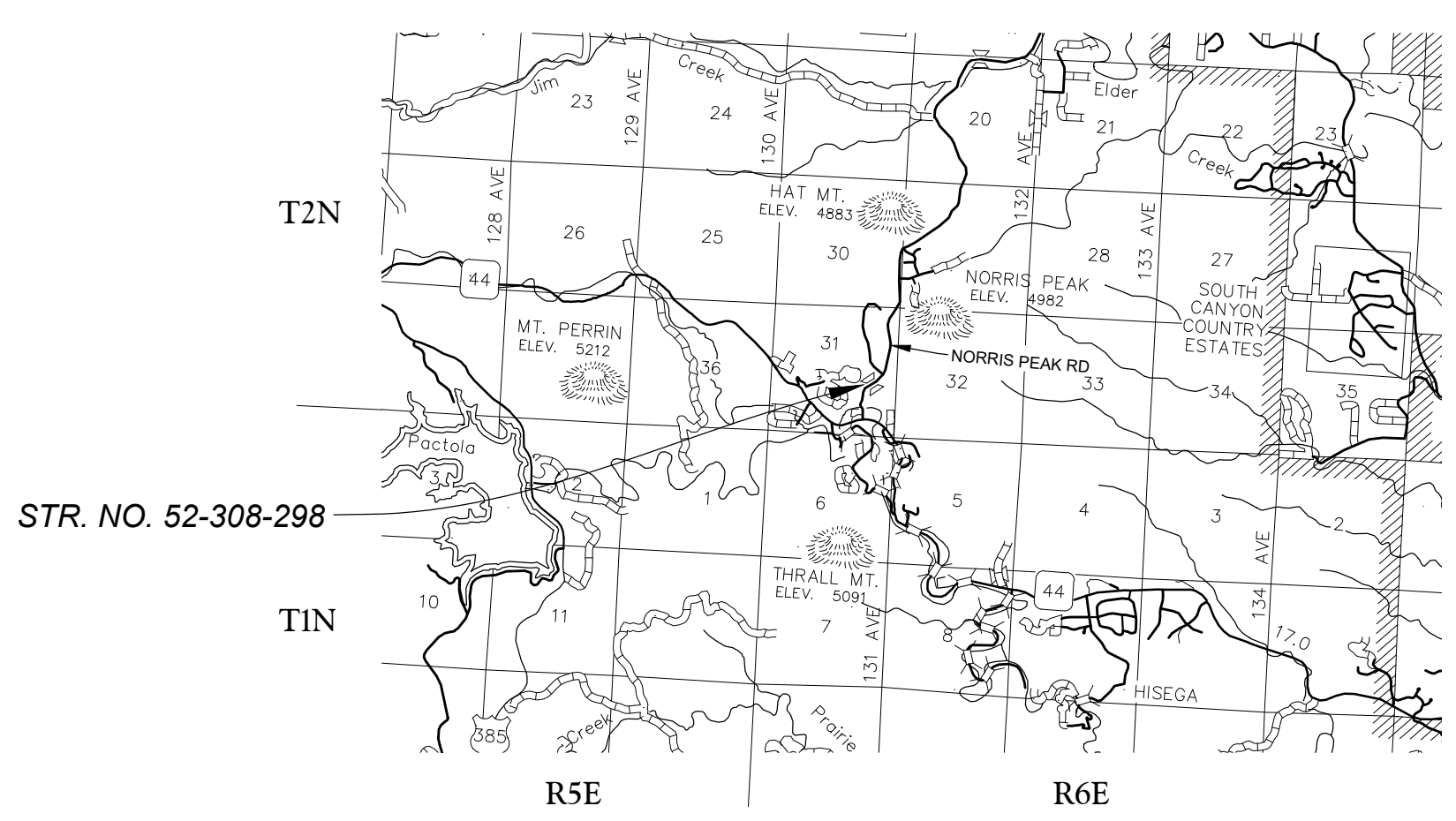
PLANS FOR PROPOSED

PROJECT 2023 BRIDGE REHABILITATION PENNINGTON COUNTY

INDEX OF SHEETS

SHEETS	
1	TITLE SHEET
2-3	ESTIMATE OF QUANTITIES AND ENVIRONMENTAL COMMITMENTS
4-5	GENERAL NOTES AND TABLES
6-7	TRAFFIC CONTROL
8	PAVEMENT LAYOUT
9-12	STANDARD PLATES
13-20	STRUCTURE PLANS

BRIDGE REHABILITATION, ASPHALT MILLING AND OVERLAY
STR. NO. 52-308-298



DESIGN DESIGNATION
 AADT (2022) 654
 V 25 MPH

STORM WATER PERMIT
 NONE REQUIRED

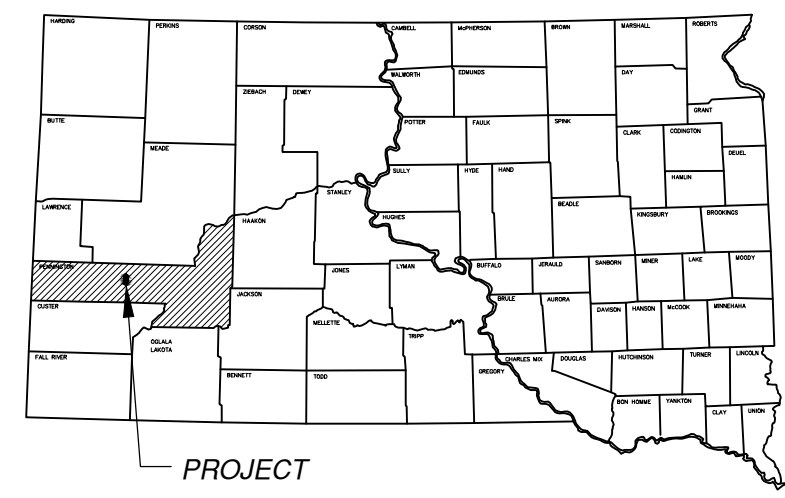


PLANS FOR PROPOSED

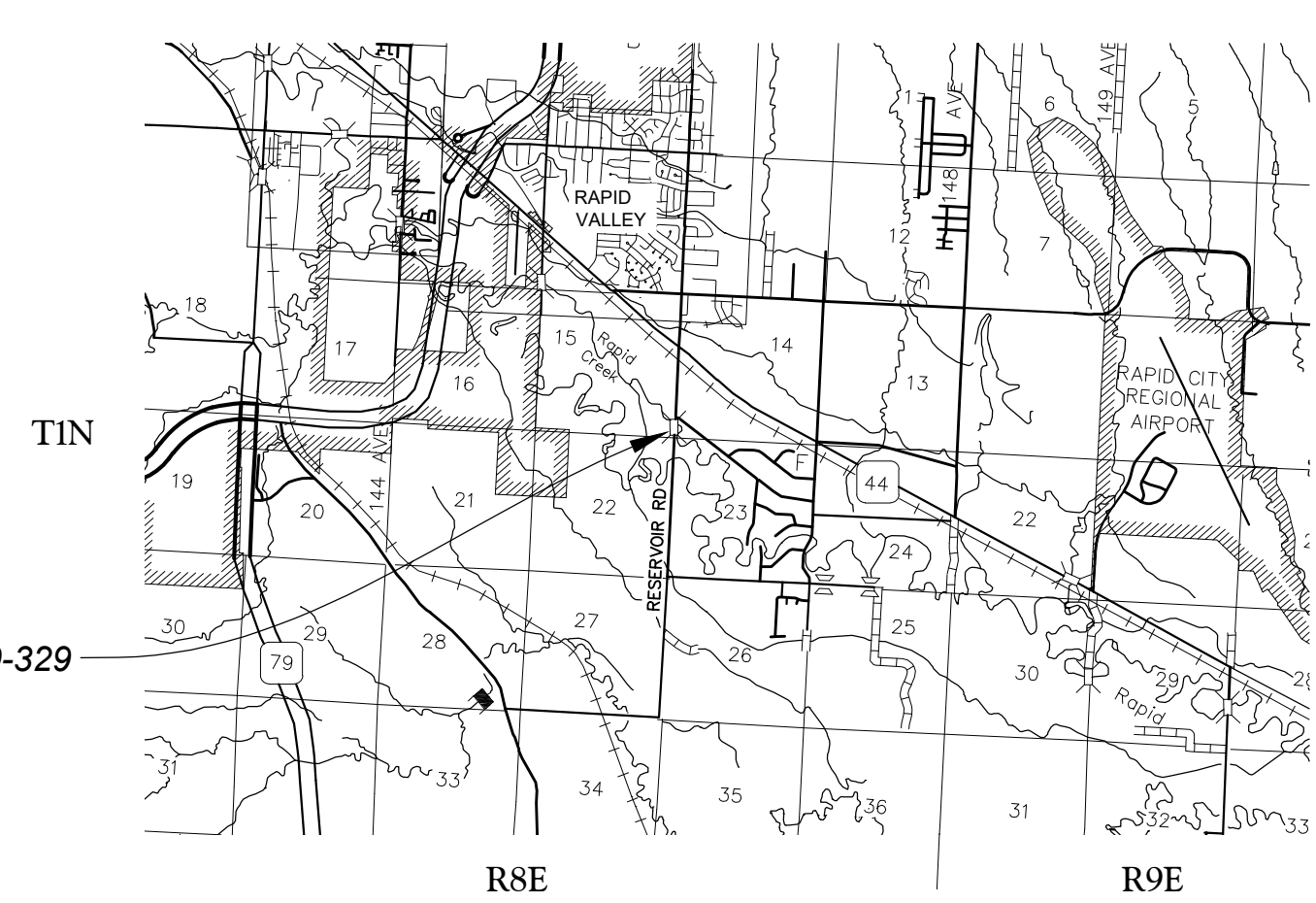
PROJECT BRF 1610(00)23-2 2023 BRIDGE PRESERVATION PENNINGTON COUNTY

INDEX OF SHEETS

SHEETS	
1	TITLE SHEET
2-3	ESTIMATE OF QUANTITIES AND ENVIRONMENTAL COMMITMENTS
4-7	GENERAL NOTES AND TABLES
8-9	TRAFFIC CONTROL
10	EROSION CONTROL
11-14	STORMWATER POLLUTION PREVENTION PLAN (SWPPP)
15	GUARDRAIL LAYOUT
16-27	STANDARD PLATES
28-29	SPECIAL DETAILS
30-32	STRUCTURE PLANS
33-35	CROSS SECTIONS



BRIDGE PRESERVATION, ASPHALT SHOULDER WIDENING, GUARDRAIL INSTALLATION PCN 09GK



STR. NO. 52-460-329

DESIGN DESIGNATION
AADT (2022) 621
V 50 MPH

STORM WATER PERMIT
Major Receiving
Body of Water: Rapid Creek
Area Disturbed: 0.07 Acres
Total Project Area: 0.07 Acres
Approx. Begin Lat,Long: 44°, 02', 24" N - 103°, 07', 53" W

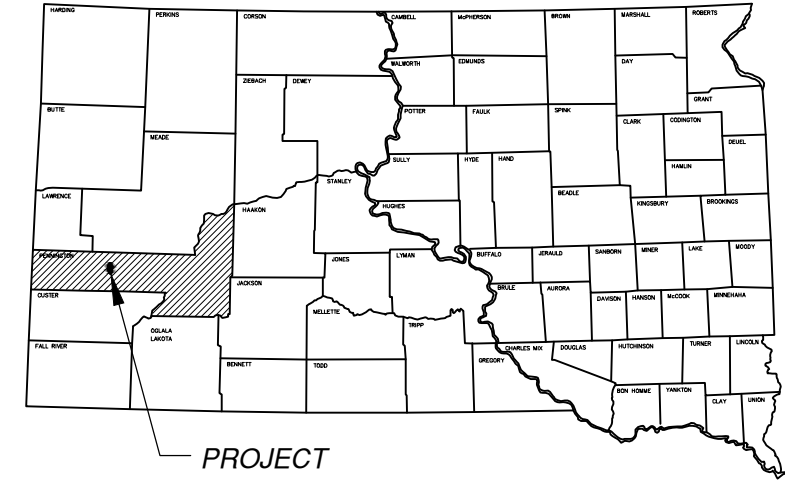


PLANS FOR PROPOSED

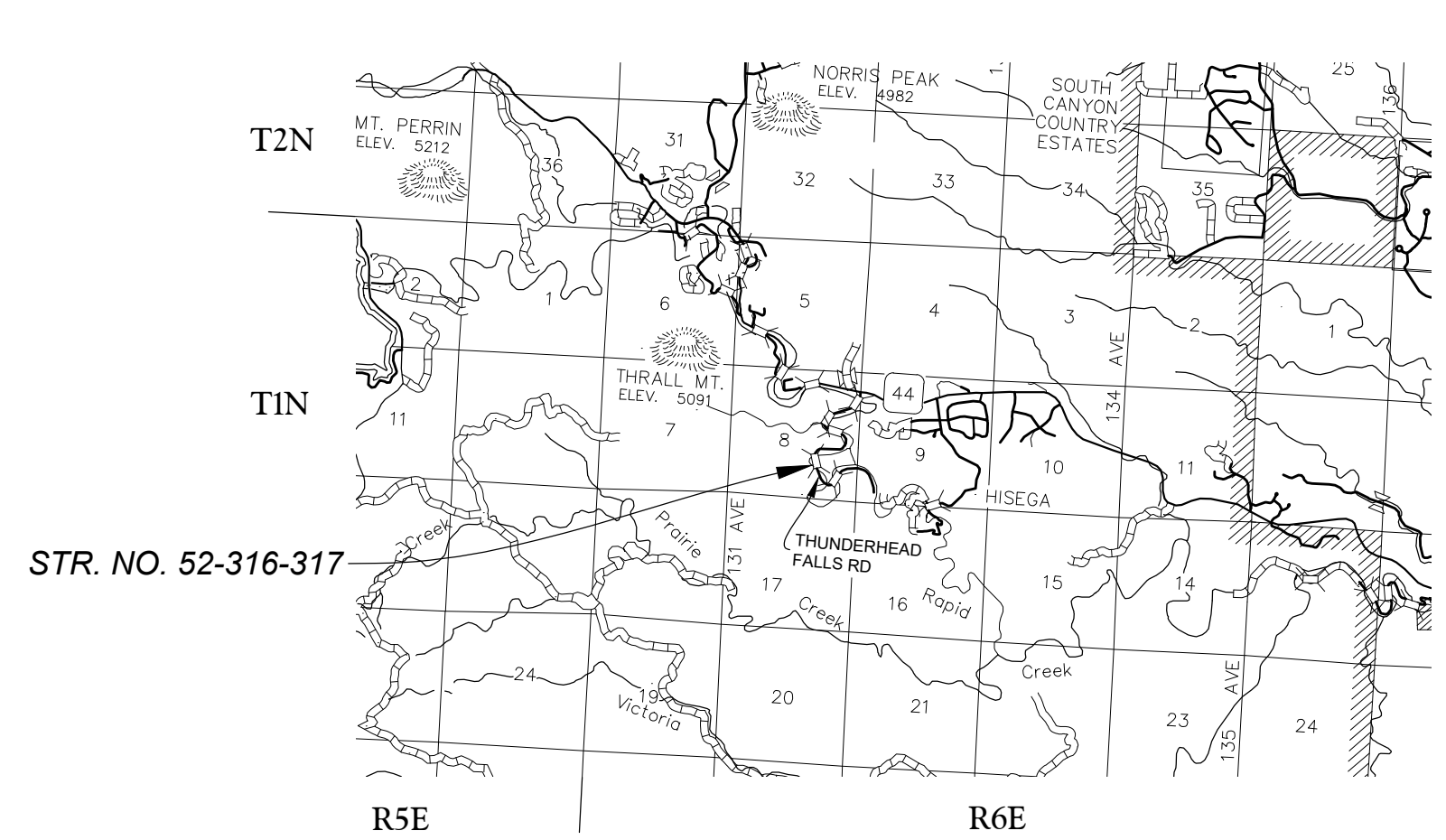
PROJECT BRO 8052(00)23-1 2023 BRIDGE REHABILITATION PENNINGTON COUNTY

INDEX OF SHEETS

SHEETS	
1	TITLE SHEET
2-3	ESTIMATE OF QUANTITIES AND ENVIRONMENTAL COMMITMENTS
4-5	GENERAL NOTES AND TABLES
6	TRAFFIC CONTROL
7	PAVEMENT LAYOUT
8-11	STANDARD PLATES
12-13	SPECIAL DETAILS
14-19	STRUCTURE PLANS



BRIDGE REHABILITATION, ASPHALT MILLING AND OVERLAY
STR. NO. 52-316-317
PCN 09HD



DESIGN DESIGNATION
AADT (2022) 62
V 25 MPH

STORM WATER PERMIT
NONE REQUIRED

